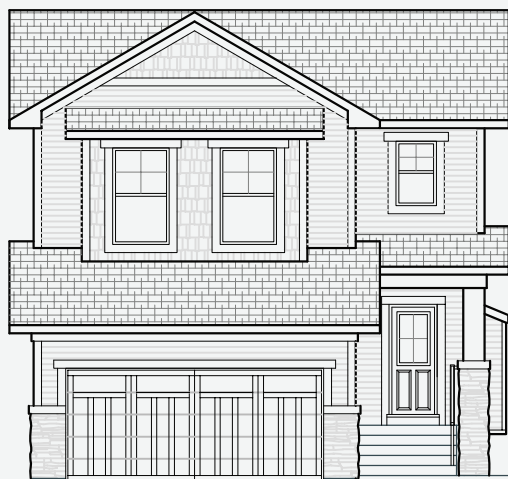
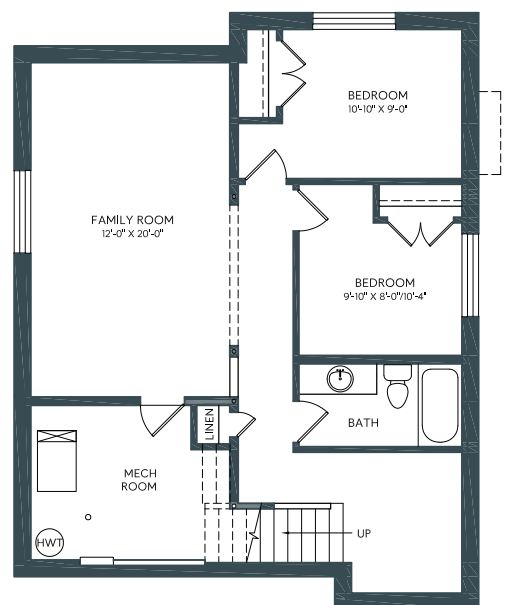


**BRAYDEN**  
 2174 SQ. FT.  
 3 BED, 2.5 BATH, DEN, BONUS ROOM, ATTACHED GARAGE

# George Town

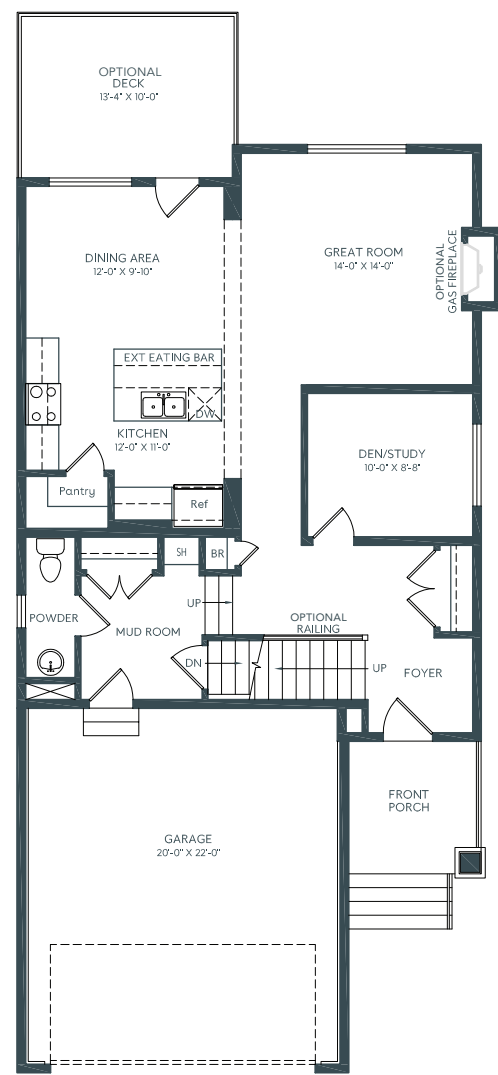


BASEMENT OPTION



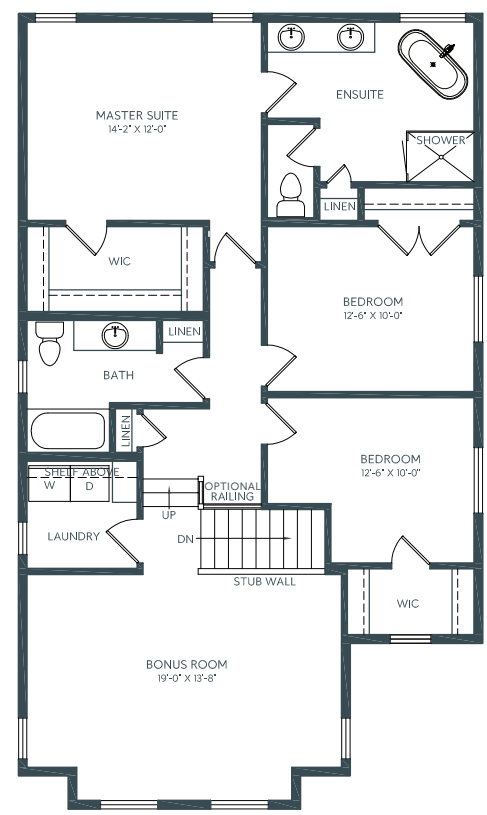
LOWER FLOOR AREA = 752 SQ. FT.  
 (OPTIONAL DEVELOPMENT)

MAIN



MAIN FLOOR AREA = 949 SQ. FT.  
 TOTAL FLOOR AREA = 2174 SQ. FT.

UPPER



UPPER FLOOR AREA = 1225 SQ. FT.  
 TOTAL FLOOR AREA = 2174 SQ. FT.

Sizes and details are approximate and subject to change E.&O.E.